

新聞稿

Press Release

PR022/25
9 April 2025

MTR Tung Chung Line Extension Project Proceeds at Full Speed Tung Chung – Sunny Bay Train Services to End Early on 19 April to Facilitate Turnout Installation

Works on MTR's Tung Chung Line Extension are proceeding in full swing to meet the target completion date of 2029. The Corporation reports today (9 April 2025) that the structural works of Tung Chung East Station[#] are making good progress, with the four turnout installations required for the future track diversion well on schedule.

To facilitate the second turnout installation on the track, scheduled for next Saturday (19 April 2025), train services between Tung Chung and Sunny Bay stations will end early at around 11 PM on the day. Passengers are advised to plan their journeys ahead and allow extra travel time.

MTR will provide free shuttle buses to transport passengers between Tung Chung and Sunny Bay stations, with a maximum frequency of one bus every three minutes. Normal train services between Hong Kong and Sunny Bay stations will be maintained until the usual end-of-service time. (Please refer to the annex for details of the last trains on the Tung Chung Line and shuttle bus services that night) Around 100 additional staff will be deployed along Tung Chung Line on the day to assist passengers, with notices via various channels and additional signage at Tung Chung and Sunny Bay stations to inform and guide passengers.

The Corporation appeals for passengers' understanding of the limited service adjustments. Given the complexity of the turnout installation works, the early service closure on the Tung Chung – Sunny Bay section will give the project team additional time to complete the procedures in one go. The Corporation shall strive to complete the works within the target time to ensure the resumption of normal service from the first train the next morning. The team will closely monitor the weather and project progress, and seek to communicate any changes or unforeseeable situations as soon as possible.

-more-

[#] The station name is a working title only.

The Tung Chung Line Extension project comprises the building of two new stations at the Tung Chung East reclamation area and in Tung Chung West near Yat Tung Estate, together with the associated new railway works. While tunnel boring works for the Tung Chung West section is ongoing, the Tung Chung East section has also seen notable progress with the completion of substructure works, and the main structural works for the station platform, concourse and two entrances are underway.

As announced last year, the major track diversion works that will connect Tung Chung East Station would require the installation of four critical turnouts along the existing Tung Chung Line tracks. According to the current project programme, the third and fourth critical turnout installations will take place in 2026 and 2027.

-End-

About MTR Corporation

To Keep Cities Moving, MTR makes encounters happen and rendezvous for a more connected tomorrow. As a recognised world-class operator of sustainable rail transport services, we are a leader in safety, reliability, customer service and efficiency.

MTR has extensive end-to-end railway expertise with over 45 years of railway projects experience from design to planning and construction through to commissioning, maintenance and operations. Going beyond railway delivery and operation, MTR also creates and manages dynamic communities around its network through seamless integration of rail, commercial and property development.

With more than 50,000 dedicated staff*, MTR carries over 10 million passenger journeys worldwide every weekday in Hong Kong, Mainland China, Australia, the United Kingdom and Sweden. Together, we Go Smart and Go Beyond.

For more information about MTR Corporation, please visit www.mtr.com.hk.

*includes our subsidiaries, associates and joint ventures in Hong Kong and worldwide

Photo Caption:

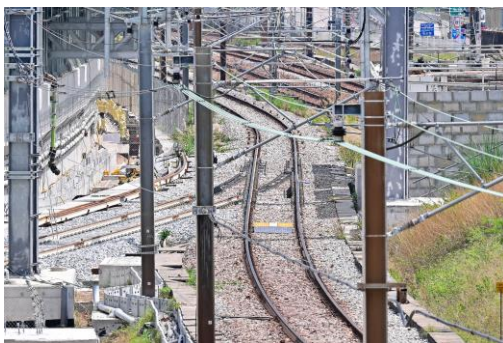
1. Mr Ben Lui, Chief of Airport Segment (left) and Mr KL Lee, Head of Project Delivery-Lantau (right) of the MTR Corporation introduce the train service adjustments on the night of 19 April and the progress of the Tung Chung Line Extension east section works.



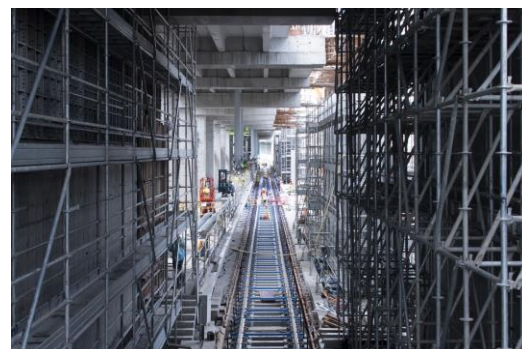
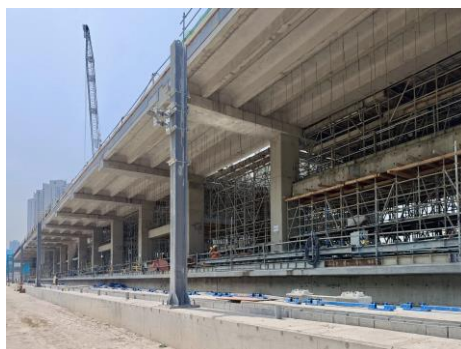
2. Mr Ben Lui, Chief of Airport Segment of the MTR Corporation (left) reminds passengers of the service adjustments in the late evening of 19 April and thanks them for their cooperation. He added that the Corporation has reminded passengers about the service adjustments through various channels over the past two months, including distributing leaflets in multiple languages in the community. Staff will be holding prominent signage in Tung Chung and Sunny Bay stations to assist passengers on the day.



3. The second turnout will be installed on the Hong Kong-bound track in the late evening of 19 April under the major track diversion works of the Tung Chung Line Extension project.



4. Mr KL Lee, Head of Project Delivery-Lantau of the MTR Corporation said that the main structural works of the station platform, concourse, and entrances are underway; subsequently, hundreds of electrical and mechanical works will follow. The Corporation is taking forward the works in an orderly manner as planned.



1. Changes to Last Train Departure Times on the Tung Chung Line:

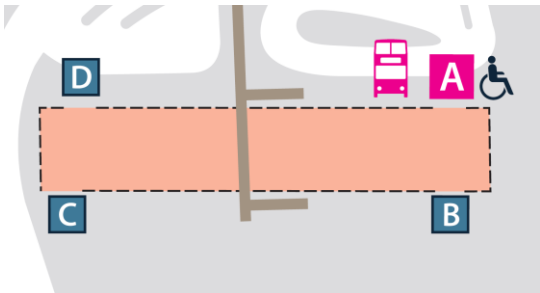

	Normal Last Train Departure Time	Adjusted Last Train Departure Time on 19 April
Tung Chung to Hong Kong	00:43	23:01
Hong Kong to Tung Chung	00:50	23:07
Sunny Bay to Tung Chung	01:10	23:28
Hong Kong to Sunny Bay	00:50 (Unchanged)	
Sunny Bay to Hong Kong	00:50 (Unchanged)	

* Passengers for the last train should enter the gates at least 5 minutes before the scheduled departure time.

2. Free Shuttle Bus Arrangements during Service Adjustments:

Departure Time of the Last Shuttle Bus		Estimated Travel Time	Frequency
Tung Chung Station to Sunny Bay Station 00:43	Sunny Bay Station to Tung Chung Station 01:18	20-30 Minutes	Every 3-9 Minutes

* Please take the shuttle bus departing Tung Chung Station before 00:18 to connect to the Hong Kong-bound train at Sunny Bay Station.

Direction	Pick-up/Drop-off Point
Tung Chung Station to Sunny Bay Station	 <p>Tung Chung Station Exit A Vehicle Lay-by</p>
Sunny Bay Station to Tung Chung Station	 <p>Sunny Bay Station Exit A Sunny Bay Public Transport Interchange</p>